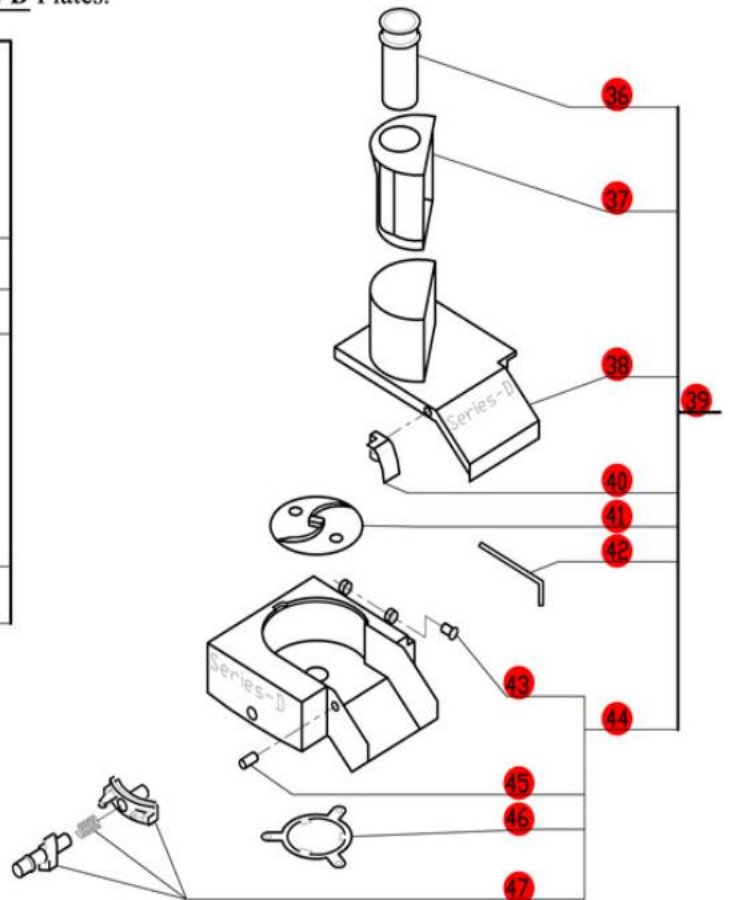
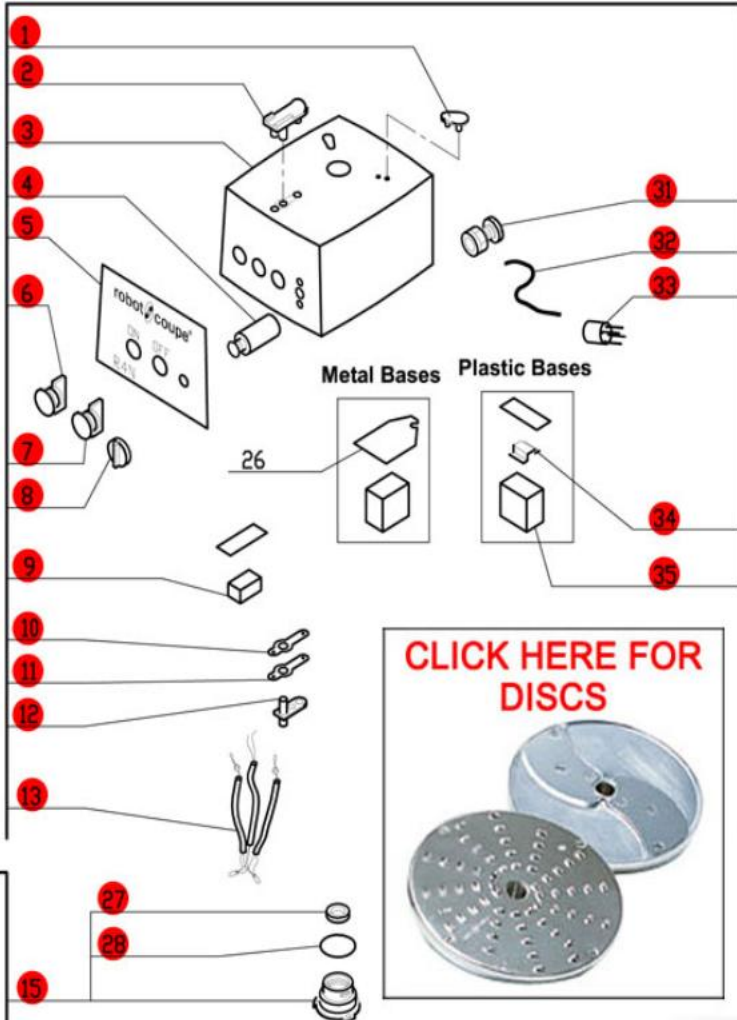


# R4C Series D

Series D, Serial Numbers 232xxxxx13 (USA)  
 and JA500A and above (Canadian)  
 2- Speed, 208-240 Volt, 3 Phase, 60Hz., 3 HP.  
 Low Speed-850 RPM, 2.6 Amps  
 High Speed- 1725 RPM, 2.8 Amps  
 Use Series-D Plates.



**Click on Red Dot  
 OR  
 Call us  
 800-465-6060**

\* RA604D old style motor is no longer available. Order S193379, 29620, R611, 117770, and four BX658 screws.

**ACCESSORIES**

Use only cutting plates listed on the "Series D" Chart.

